

Jaw Crusher GCR 106



Rev Machine

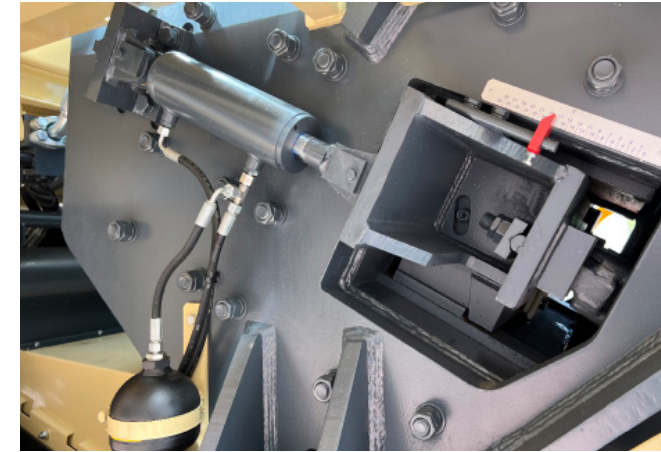
+39 0541 928 474 
info@rev.it 
www.rev.it 

This machine is distinguished by its robustness and reliability, even when handling the hardest and most abrasive materials. It was developed based on a series specifically designed for quarry use. Equipped with jaw crushers that meet the standards for large primary crushers, this plant ensures exceptional performance. The hydraulic system allows for easy adjustment of the Closed Side Setting (CSS) and offers overload protection by automatically opening the crushing chamber if non-crushable material, such as solid metal pieces or excavator teeth, enters. The vibrating feeder and Grizzly pre-screen guarantee reliable performance, even under the most varied and demanding operating conditions. Optimal performance is further ensured by the modern turbo diesel engine and load-sensing pumps.

Inlet dimensions (mm)	1060x800
CSS adjustment (mm)	30-120
Weight (kg)	16500
Feeding hopper	
Standard capacity (m3)	7
Feed height (mm)	4200
Vibrating feeder	
Width (mm)	1000
Length (mm)	2400
Prescreen Grizzly	
Width (mm)	1050
Length (mm)	2300
Decks	2
Main conveyor	
Width (mm)	1000
Discharge Height (mm)	3300
Reversible conveyor	
Width (mm)	750
Length (mm)	2000
Side discharge conveyor	
Width (mm)	650
Discharge Height (mm)	2900
Engine: Power (kW)	187
Weight (kg)	46500
Performance	
Max feeding size (mm)	750
Production ton/h	up to 300
Working dimensions	
Length (mm)	15334
Width (mm)	2800
Height (mm)	4000

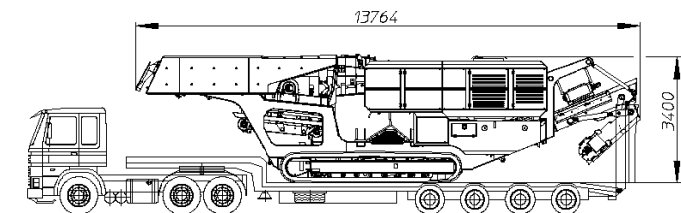
Optional:

- ✓ Dirt conveyor
- ✓ Dust suppression system
- ✓ Deflector plate under crusher
- ✓ Hydraulic foldable Hopper Walls
- ✓ Automatic greasing unit
- ✓ Diesel fueling pump
- ✓ Reverse crusher



Transport dimensions

Length (mm)	13764
Width (mm)	2800
Height (mm)	3400



Larghezza di trasporto 2800



Rev Machine

+39 0541 928 474 
 info@rev.it 
 www.rev.it 